

# VT-TNR818PN

8 Channel 8 MegaPixel [4K] Real Time PoE Network Video Recorder [Preliminary Specs]



VITEKCCTV.COM  
(888) VITEK-70



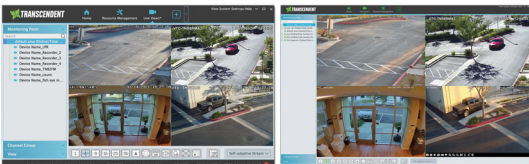
**NDA  
COMPLIANT**



## KEY FEATURES

- 8 Channel Stand-alone Real-time IP Network Video Recorder
- Full 8 Megapixel [4K] Real-time recording (240fps) with 240fps Playback
- 4K HDMI & VGA Video Outputs
- H.265S / H.265+ / H.265 / H.264 Video Compression
- Tripwire, Intrusion, Object Detected/Missing, Exception, Crowd Density, People Intrusion and People Counting, License Plate Recognition, Human / Vehicle Classification
- Plug and Play & Auto configuration for many leading ONVIF compliant IP Camera models
- Internal 8-Port PoE Switch
- 1 Gigabit LAN Port
- Pentaplex: Live Display / Record / Playback / Backup / Remote Access
- 1 Internal SATA2 / 3 HDD Slot w/ up to 10TB (1 x 10TB HDD) Internal Storage
- Network Based PTZ Control
- Applications for iOS® & Android®
- Remote Viewing over the Internet via Web Browser or LAN
- Free VMS (Video Management Software) Lite and Standard versions available for organized viewing of multiple sites [For Enterprise version please contact your Vitek Reseller]
- Supports both Dynamic and Static IP Addresses
- Web-based remote configuration
- Control locally via USB Mouse or with the Included IR Remote control
- 3 Year Warranty

## VIDEO MANAGEMENT SOFTWARE



Local Management, Viewing Interface & Remote Viewing with Web Browsers

Remote Viewing Using Mac OSX



Apps Available for iPhone, iPad, & Android Devices

## REAR PANEL



## SPECIFICATIONS

Video Input / Resolution	8 IP Channels up to 8 MegaPixel [4K]
Main Monitor Output	1 x 4K HDMI / 1 x 1080P VGA
Multi Operation	Pentaplex: Live Display / Record / Playback / Backup / Remote Access
Recording Compression	H.265S / H.265+ / H.265 / H.264
OS	Embedded Linux
Recording	240fps (30fps per channel)
Audio over IP Inputs	8 (IP Camera Dependent)
Local Audio In/Out	IN: RCA x 1CH / OUT: RCA x 1CH
Two-Way Audio	YES
Encode	CBR
Quality Levels	11 level (According to Bit Rate)
Recording Modes	Manual / Timer / Motion / Sensor
Local Playback	8CH
Analytics	License Plate Recognition, Tripwire, Intrusion, Object Detected/Missing, Exception, Crowd Density, People Counting, Human / Vehicle Classification
Search	Time sliced image search, Time/Calendar search, Event (Motion, External alarm), Tag search
Alarm Modes	Sensor, Motion, Video loss, IP conflict, Disk error, Illegal access, Network disconnection
Alarm Inputs	IP Camera Dependent (No Local Input)
Alarm Triggering	Record, Snap, PTZ move, Alarm out, E-mail, etc
Network Interface	RJ45 x 1
PoE ports	RJ45 x 8, with PoE
PoE Standard	802.3af 15W max per port
Total PoE Budget	100W all ports
Bit Rate (Per Camera)	512Kbps ~ 10 Mbps (Adjustable)
Total Bandwidth	80Mbps Incoming / 80Mbps Outgoing
Dual-stream	Individual Network Video Stream and local recording stream, set separately
Network Protocols	TCP/IP, UDP, DHCP, DNS, PPPoE, DDNS, Email, UPNP, NAT, Telnet
Internet-streaming	Total 28 task resource (Local+Remote) 4 CH IE playback
Remote Viewing	CMS / Web Browser / Mobile Platforms
Remote Users	10 Simultaneous Online Users
Backup	Network, USB
SATA HDD	SATA x 1, max 10TB each
PTZ Protocol	Through Network
USB	USB 2.0 x 2 (for mouse and USB backup device)
Power Consumption, Supply	≤ 10W (Without HDD), 48V/2.5A
Working Environment	32° ~ 122°F @ 10% ~ 90% RH
Dimensions (W x H x D)	11.81" x 1.77" x 9.80" (300mm x 45mm x 249mm)
Weight Net, Shipping w/o HDD	2.69, 5.1/lbs (1.22, 2.34kg)



(888) VITEK-70 | WWW.VITEKCCTV.COM  
28492 Constellation Road Valencia, CA 91355

An Eye On  
Innovation